



How the IOF works

for Members



International Orienteering Federation (IOF)

Introduction

The International Orienteering Federation is the governing body of the sport of orienteering globally. The IOF governs four orienteering disciplines: foot orienteering, mountain bike orienteering, ski orienteering, and trail orienteering.

The IOF was founded on 21 May 1961 at a Congress held in Copenhagen, Denmark. The 10 founding members were Bulgaria, Czechoslovakia, Denmark, Federal Republic of Germany, Finland, German Democratic Republic, Hungary, Norway, Sweden, and Switzerland. The IOF was recognised by the International Olympic Committee (IOC) in 1977. From 2016, the IOF has been registered in Sweden with the IOF Office located in Karlstad.

The aims of the International Orienteering Federation are to spread the sport of orienteering, to promote its development and to create and maintain an attractive world event programme.

The conduct of the IOF is governed by its Statutes and Code of Ethics:

[Statutes](#)

[Code of Ethics](#)

Membership, Rights, Obligations and Fees

The IOF is composed of national orienteering federations that have been admitted to membership. Only one legally constituted orienteering organisation from any one country, defined as an independent member of the IOC, may be admitted as a Member.

The IOF may provide provisional membership to a national organisation when first admitted to membership. A Provisional Member may retain that status for two Congress periods, i.e. four years. Over this four year period the Provisional Member must, in the view of the IOF Council, have actively developed the sport of orienteering in that country. The IOF Council may extend the provisional membership one additional Congress period (2-years) if a Provisional Member has shown development but not at a rate that would allow Member status.

The IOF has Members in six regions: Africa, Asia, Europe, North America, Oceania, South America. Refer to the link below for the latest list of IOF members.

[List of current IOF members](#)

Membership rights:

Members are permitted to participate in all IOF Events, to organise IOF events, to make proposals and to express views, send delegates and vote at IOF General Assemblies, and to publicise activities via the IOF, provided that member obligations have been met.

A Provisional Member has the same rights as a Member except that they may not vote at the General Assembly, nor nominate candidates to the IOF Council.

Members receive all official IOF communications and materials and are able to take part in courses, seminars and other activities conducted by the IOF.

Membership obligations:

Members are obligated to abide by the Statutes of the IOF, the IOF Code of Ethics, the World Anti-Doping Code and the IOF Anti-Doping Rules, the IOF Environmental Policy and other IOF Rules, and the decisions of the General Assembly, Ethics Panel and Council.

Members shall also stage national championships in at least one orienteering discipline and shall be committed to the development of orienteering in their country or territory.

Members shall meet all financial obligations to the IOF for membership fees, contractually agreed event sanction and service fees and participation fees at IOF activities.

Membership fees:

Annual membership fees are set by the General Assembly for the 2-year period which follows and shall be paid before March 1 each year.

The methodology for calculating membership fees was agreed at the IOF General Assembly in 2008. Each member is allocated to a membership group based upon 3 factors; the international activity, the domestic activity and the GDP per capita of the member country. A re-evaluation of each member's status regarding the above factors is conducted prior to each General Assembly to determine if the member has changed membership group. If a member changes to a higher or lower group, only 50% of the fee adjustment is applied in the first year.

For the 2017-2018 period the following membership fees are applicable:



MEMBERSHIP FEES IN 2017 and 2018 Decided at the 2016 General Assembly

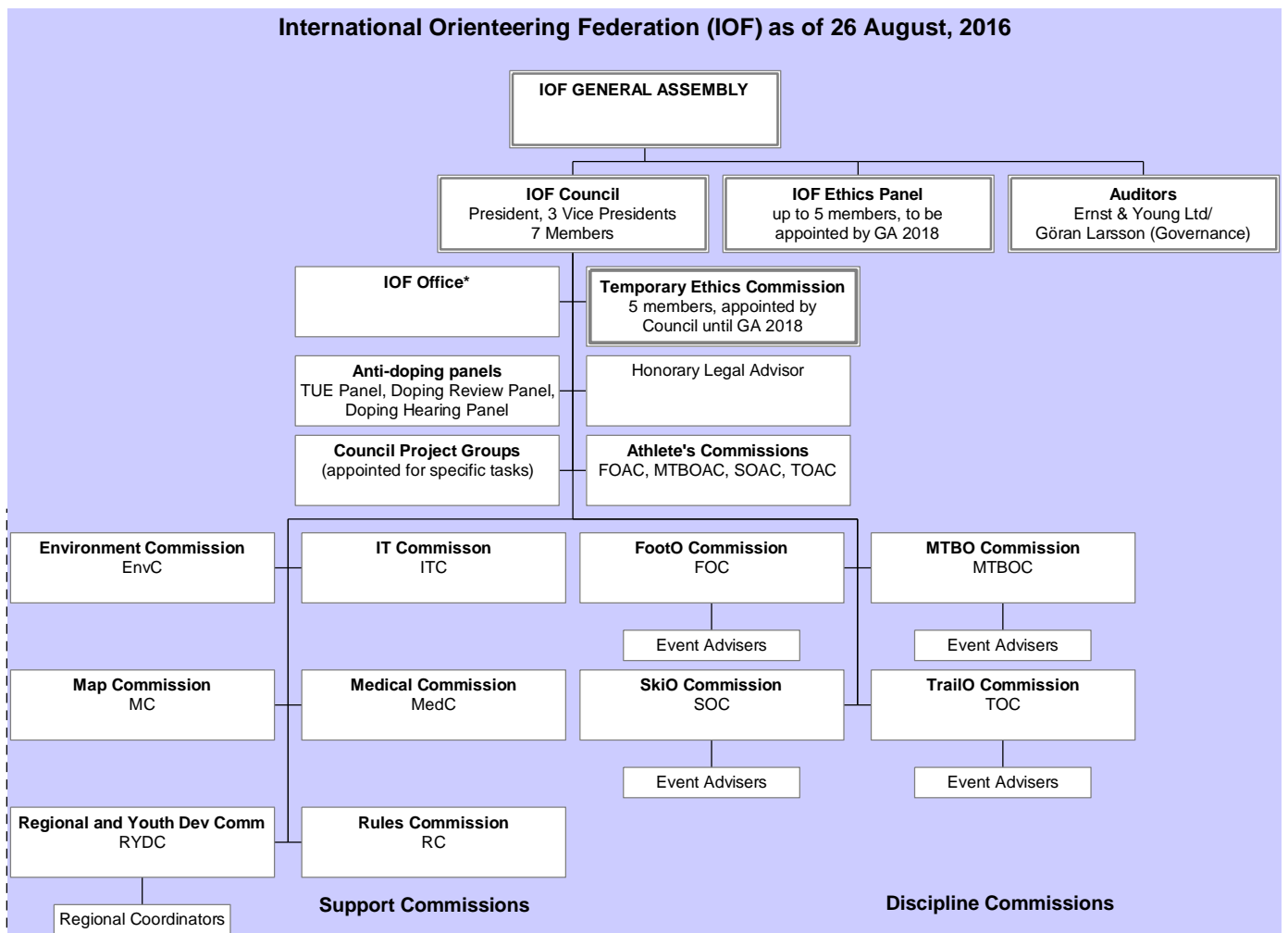
The table below is the application of the existing system for determining membership fees. 7 members will change fee-level between 2016 and 2017. This is shown in **bold**.

Fee level	Allocation of members to fee groups for 2017 & 2018	Fees in EUROS (€)		
		2016	2017	2018
1	FIN, NOR, SWE, SUI, GBR* (5)	16420	14770 <i>GBR 11490</i>	14770
2	DEN (1)	8210	8440	8440
3	AUS, AUT, FRA, ITA (4)	4690	4820	4820
4	CZE, ESP, EST, GER, HUN, LAT, LTU, IRL, POR, RUS* , USA (11)	2680	2760 <i>RUS 3725</i>	2760
5	BEL, BUL, CAN, CRO* , HKG, ISR, JPN, NZL, POL, SVK, UKR (11)	1530	1580 <i>CRO 1230</i>	1580
6	BLR, BRA, CHN, CYP, KAZ, KOR, LIE, NED, PRK, ROU, RSA, SLO, SRB, TPE, TUR (15)	880	900	900
7	Starting from 2017 – all provisional members and lowest members' category: ARG, AZE**, BAR* , CHI, CMR**, COL* , CUB, DOM**, ECU, EGY, GEO, INA, IND, IRI**, KYR, MAS, MDA* , MKD, MNE* , MOZ, NEP**, UGA**, URU (17)	500	300 <i>BAR, COL, MDA, MNE 590</i>	300
8	From 2017 Category removed	100		
Total income from membership fees EUR		177530	169385	169710

(*) The principle in the fee system where the fees for members changing fee-levels increases or decreases progressively: 50% in 2017 and 100% in 2018. GBR (from group 2 to 1), RUS (from group 3 to 4), CRO (from group 6 to 5), BAR/COL/MDA/MNE (from group 6 to 7)

(**) Denotes Provisional Members

Structure



IOF General Assembly

The decision-making body of the IOF is the **General Assembly**. A General Assembly may be either Ordinary or Extraordinary. The Ordinary General Assembly meets biennially, currently in even years, between 1 June and 31 December. Written invitations are sent out to the member federations at least six months, and the agenda at least two months, in advance of the Ordinary General Assembly.

Each IOF member has the right to send three delegates to a General Assembly. Each IOF member represented at the General Assembly, except for provisional members, has one vote.

The **agenda** of an Ordinary General Assembly includes:

- Opening of the General Assembly.
- Roll call of delegates.
- Establishment of the number of voting members present.
- Election of a General Assembly presidium.
- Election of two persons to check the minutes.
- Election of three tellers to count votes and observe elections.
- Approval of the agenda, and ruling on the urgency of any items not included.
- Decision whether the sessions should be open. If the sessions are open, then in special cases the public may be excluded from specific items on request.

- Approval of the minutes of the previous General Assembly.
- Report by the Council on the activities of the IOF since the last Ordinary General Assembly, and approval of same.
- Auditors' report, approval of the accounts for the two previous calendar years and discharge of the Council
- Applications for membership and decisions regarding expulsions.
- Proposals.
- Membership fees, budget and activity plan for the two calendar years following the General Assembly.
- Appointment of two auditors and one substitute auditor for the current and the following financial period
- Appointment of up to five members to the Ethics Panel.
- Election of the Council.
- Announcement of place and approximate dates of the next Ordinary General Assembly
- Any other business.
- Closure of the General Assembly

Decisions of the General Assembly come into force at the end of the General Assembly. As an exception, as soon as an IOF General Assembly has decided to admit an organisation to membership, the delegates of the organisation, except in the case of provisional membership, are entitled to participate in the General Assembly with all rights and duties, provided the membership fee has been paid.

[Information from previous General Assemblies](#)

The Ethics Panel

The Ethics Panel is an independent judicial body in the IOF consisting of up to five members that are appointed by the General Assembly. The Ethics Panel will be appointed for the first time by the General Assembly in 2018. Until that time the IOF Council has appointed a temporary Ethics Commission with the same tasks as the Ethics Panel.

The Ethics Panel has 3 main tasks, to review regularly all business and operations covered by the IOFs Code of Ethics, to adjudicate upon violations of the Code of Ethics and to report findings to the Council or GA and impose sanctions for violations of the Code of Ethics.

Any suspected violations of the Code of Ethics should be reported to the Ethics Panel for consideration. This can be done via the IOF Office or directly to the Ethics Panel.

[Ethics Panel/Commission](#)

The Presidents' Conference

The Presidents' Conference meets biennially, currently in odd years, often in conjunction with the World Orienteering Championships. The agenda is sent out at least two months before the meeting. The Presidents' Conference is advisory, i.e. it does not have formal decision-making power.

As a minimum, the following are invited to the Presidents' Conference:

The IOF Council, the IOF Secretary General, the President of each member organisation (or his/her representative).

[Information from previous Presidents' Conferences](#)

The Council

The Council leads the IOF between General Assemblies. The Council meets usually 4 times a year.

The President, the 3 Vice Presidents and the 7 Council Members are elected for a four-year term. A system of rotation ensures that approximately half of the Council positions are declared vacant every two years. Among the 3 elected Vice Presidents, the Council appoints a Senior Vice President at its initial meeting of the Congress period.

The election for the position of President is held every fourth year at the IOF Congress held in the year of the Olympic Summer Games. At the same Congress, one Vice President and four Council Members shall also be elected by the General Assembly.

Two Vice Presidents and three Council Members shall be elected by the General Assembly at the IOF Congress held in the year of the Olympic Winter Games.

[Current IOF Council](#)

The Council works in accordance with the IOF Strategic Plan and Activity Plan, for the current 2-year congress period, which are determined by the General Assembly. The Council is also responsible for the operations of the IOF, e.g. the appointment of all organisers of IOF Events (as of GA 2016), supervising event quality and the IOF rules, managing global development activities, directing communications and representing the IOF in connection with IOF events, partner events and in international sports bodies.

The Council has 2 working groups which take on special tasks within the Council.

Presidents Working Group

The Presidents Working Group (PWG) consists of the President and the 3 Vice Presidents. The PWG meets in advance of the Council meetings to determine the agenda and to prepare items for the meeting. The PWG may also meet ad hoc to discuss procedural issues which need to be addressed between Council meetings. The PWG also discusses professional staff issues with the Secretary General/CEO.

Event Supervisory Board

The Event Supervisory Board (ESB) is a sub group of the IOF Council consisting of 3 Council members and the IOF CEO. The ESB can be called on by Council, the IOF Office, Commissions, Senior Event Advisers and Event Adviser teams. The ESB serves as a first level escalation body. On behalf of Council, the ESB deals with Special Rules, requests for rule deviations of a technical nature, decisions on the dates of IOF Events, appointments of Senior Event Advisers and Event Adviser teams and, when called upon, initiates measures to resolve event quality related problems. Any decisions taken by the ESB shall be noted in the minutes of the subsequent Council meeting. The ESB makes such decisions after submissions from Council, the IOF Office, Commissions, Senior Event Advisers and Event Adviser teams. If the ESB is unable to make a decision about a particular matter, it is referred to the full Council for a ruling.

The IOF Office

The IOF Office manages and administers the affairs of the federation in accordance with decisions of the General Assembly and Council. It provides support and service to Council, Commissions and member federations and is the point of contact for external organisations.

The IOF office is located in Karlstad, Sweden.

[The IOF has a number permanent, part-time and contract members of staff.](#)

IOF Commissions

Commission Members are appointed by Council for a Congress period, i.e. 2 years. The IOF has four discipline commissions (FOC, MTBOC, SOC, TOC) and 6 support commissions (Environment, IT, Map, Medical, Rules, Regional and Youth Development commissions). Commissions are delegated tasks by the IOF Council in accordance with the IOFs Strategic and Activity Plans. As experts they prepare reports and proposals for Council decision.

Discipline Commissions work primarily with the management and development of their respective discipline, for example leading discipline event planning, event quality supervision, rules and discipline development projects. Discipline Commissions are also responsible for the education and accreditation of IOF Event Advisers in the respective discipline.

Support Commissions work in support of the Council and discipline commissions in specific areas of expertise, for example rules, mapping, regional development etc. The Regional and Youth Development Commission is responsible for the appointment and management of a number of IOF Regional Coordinators who work with development in specific geographic regions.

For each discipline, there is also an Athletes Commission. The Athletes Commission is appointed independently by the athletes within each discipline, and reports directly to the Council. They work as a liaison body between the athletes, Council and the respective discipline commission. They may raise issues of importance to athletes for Council consideration and also act as a reference group for Council when making decisions which impact their discipline.

[More information about Commissions](#)

Website & Social media accounts



www.orienteeing.org



www.worldorienteeringday.com



www.liveorienteering.com



www.facebook.com/IOFarena



<https://twitter.com/IOForienteering>



www.instagram.com/iof_orienteering

Abbreviations used within the IOF

International Orienteering Federation

IOF International Orienteering Federation
GA Ordinary General Assembly
ExGA Extraordinary General Assembly
PC Presidents' Conference
EthP/EthC Ethics Panel/Ethics Commission

Discipline Commissions

FOC Foot Orienteering Commission
MTBOC Mountain Bike Orienteering Commission (MTB Orienteering Commission)
SOC Ski Orienteering Commission
TOC Trail Orienteering Commission

Support Commissions

EnvC Environment Commission
ITC IT Commission
MC Map Commission
MedC Medical Commission
RYDC Regional and Youth Development Commission
RC Rules Commission

Athletes' Commissions

AC Athletes' Commission (FOAC, MTBOAC, SOAC, TOAC)

IOF Regions

RWG Regional Working Group
AsWG Asian Working Group
EWG European Working Group
NAWG North American Working Group
OWG Oceanian Working Group
OFAf Orienteering federations in Africa
OFAs Orienteering federations in Asia
OFE Orienteering federations in Europe
OFNA Orienteering federations in North America
OFO Orienteering federations in Oceania
OFSA Orienteering federations in South America

National Federations (IOC acronyms)

NF National Federation
ARG Argentina
AUS Australia
AUT Austria
AZE Azerbaijan
BAR Barbados
BEL Belgium
BLR Belarus

BRA Brazil
BUL Bulgaria
CAN Canada
CHI Chile

CHN China
CMR Cameroon
COL Colombia
CRO Croatia

CUB Cuba
CYP Cyprus
CZE Czech Republic
DEN Denmark
DOM Dominican Republic
ECU Ecuador
EGY Egypt
ESP Spain
EST Estonia
FIN Finland
FRA France
GBR Great Britain
GEO Georgia
GER Germany
HKG Hong Kong
HUN Hungary
INA Indonesia
IND India
IRI Iran
IRL Ireland
ISR Israel
ITA Italy
JPN Japan
KAZ Kazakhstan
KGZ Kyrgyzstan
KOR Korea
LAT Latvia
LIE Liechtenstein

LTU Lithuania
MAS Malaysia
MDA Moldova
MKD Macedonia
MNE Montenegro
MOZ Mozambique
NED Netherlands
NEP Nepal
NOR Norway
NZL New Zealand
POL Poland
POR Portugal
PRK People's Democratic Republic of Korea
ROU Romania
RSA South Africa
RUS Russia
SLO Slovenia
SRB Serbia
SUI Switzerland
SVK Slovakia
SWE Sweden
TPE Chinese Taipei
TUR Turkey
UGA Uganda
UKR Ukraine
URU Uruguay
USA United States of America

Disciplines

FootO Foot orienteering
MTBO MTB orienteering
SkiO Ski orienteering
TrailO Trail orienteering

Events

WOC World Orienteering Championships
WMTBOC World Mountain Bike Orienteering Championships
WSOC World Ski Orienteering Championships
WTOC World Trail Orienteering Championships

WCup World Cup (Orienteering, Ski Orienteering, MTB Orienteering)

JWOC Junior World Orienteering Championships
JWMTBOC Junior World MTB Orienteering Championships
JWSOC Junior World Ski Orienteering Championships

WMOC World Masters Orienteering Championships
WMMTBOC World Masters MTB Orienteering Championships
WMSOC World Masters Ski Orienteering Championships

WRE World Ranking Event

ROC Regional Orienteering Championships
AsOC Asian Orienteering Championships
AsJYOC Asian Junior and Youth Orienteering Championships
AsSOC Asian Ski Orienteering Championships
EOC European Orienteering Championships
EMTBOC European MTB Orienteering Championships
ESOC European Ski Orienteering Championships
ETOC European Trail Orienteering Championships
EYOC European Youth Orienteering Championships
EYSOC European Youth Ski Orienteering Championships
EJMTBOC European Junior MTB Orienteering Championships
EYMTBOC European Youth MTB Orienteering Championships
NAOC North American Orienteering Championships
NASOC North American Ski Orienteering Championships
OOC Oceania Orienteering Championships
SAOC South American Orienteering Championships

TWG The World Games
WMG World Masters Games
WUOC World University Orienteering Championships
WUSOC World University Ski Orienteering Championships
EMG European Masters Games

External Relations

IF International Federation
IOC International Olympic Committee
NOC National Olympic Committee
ARISF Association of the IOC Recognised International Sports Federations
IWGA International World Games Association
IMGA International Masters Games Association
FISU International University Sports Federation
ISF International School Sports Federation
CISM International Military Sports Council
IPC International Paralympic Committee
CAS Court of Arbitration for Sport

Anti-Doping

WADA World Anti-Doping Agency
NADO National Anti-Doping Organisation
DCO Doping Control Officer
RTP Registered Testing Pool
TUE Therapeutic Use Exemption
ADAMS Anti-Doping Administration & Management System

Personnel

SVP Senior Vice President
VP Vice President
SG Secretary General
ESB Event Supervisory Board
SEA Senior Event Adviser

EA Event Adviser
RegC Regional Coordinator
PM Project Manager

Specifications

ISOM International Specification for Orienteering Maps
ISMTBOM International Specification for MTB Orienteering Maps
ISSkiOM International Specification for Ski Orienteering Maps
ISSOM International Specification for Sprint Orienteering Maps

Publications

OW Orienteering World
SciJO Scientific Journal of Orienteering